

PRODUCT INFORMATION

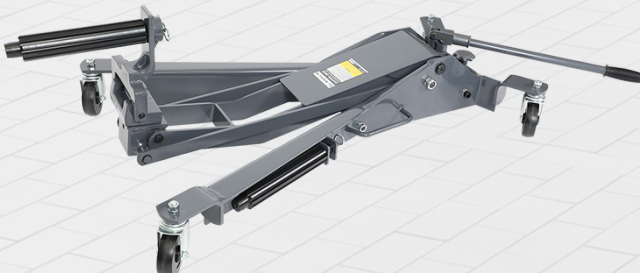
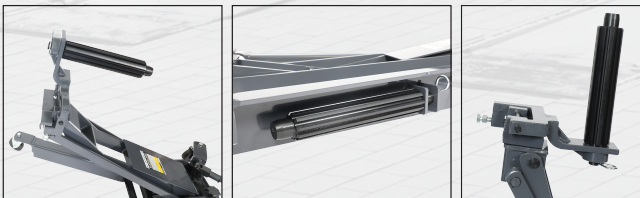
HYDRAULIC CLUTCH JACK - 130KG

The Borum Industrial 130kg Hydraulic Clutch Jack is perfect for earthmoving equipment and truck clutch and/or flywheel installation and removal. It features two fully adjustable splines, smooth, manually operated hydraulic lifting and lowering and four 360° swivel caster wheels for better load positioning. The ergonomic multi position rotating jacking handle makes overall maneuverability simple and efficient in a busy workshop.



Features

- Designed for lifting, lowering, installing & removing heavy vehicle clutch/flywheel assemblies
- Constructed of industrial-grade steel and built to exacting standards for quality and durability
- High quality hydraulic steel jacking cylinder results in low physical effort needed to lift load
- Industrial strength hydraulic system is protected from overload damage
- Filled with industrial grade 32 hydraulic fluid
- Rugged heavy industrial wheels and full swivel ball bearing castors
- User-friendly rotating pumping handle for maximum multi-directional operation
- Lead-free paint finish is oil, grease and dirt-resistant for easy cleanup
- Two 10-tooth alignment splines included which conveniently stores on chassis



**INDUSTRIAL
QUALITY**

- Safe Working Capacity: 130kg
- Height: Min. 288mm Max. 980mm
- Chassis Dimensions: 1041 x 609mm
- 1 x 2" Alignment Spline Included (10 Tooth)
- 1 x 1-3/4" Alignment Spline Included (10 Tooth)
- Carton: 1070 x 710 x 220mm
- Gross Weight: 62kg

www.tqbbbrands.com.au

PRODUCT CODE: BCJ130