

# TQ PRO

Trusted by serious professionals

## OWNERS MANUAL

1,100KG  
AIR / HYDRAULIC

# POWETRAIN / BATTERY LIFTER



**Professional  
Reputable  
Outstanding**

⊕ **STRONG** TQ PRO **LATEST APPLIED TECHNOLOGIES**  
⊕ **PRECISE** Trusted by serious professionals  
⊕ **RELIABLE**  
⊕ **WELL FINISHED** 

### About the TQ Pro brand

TQ Pro top quality Tools and Equipment are designed and manufactured for specialist *professional use in a garage and workshop* environment. TQ Pro products are strong, reliable, and well finished for the expert tool user who appreciates professional design, reliability, and attention to detail. Covered by our **12month trade use warranty**, our TQ Pro Tools & Equipment are made with pride to deliver the best combination of professional performance, presentation, and reliability.

Working Load Limit	Minimum Platform Height	Maximum Platform Height	Platform Size	Net Weight
1100kg	587mm	1758mm	762 x 1524mm	376kg

# WARNING INFORMATION

IMPORTANT: READ ALL INSTRUCTIONS BEFORE USE



The instructions and warnings contained in this manual should be read and understood before using or operating this equipment. Do not allow anyone to use or operate this equipment until they have read this manual and have developed a thorough understanding of how this equipment works. Failure to observe any of the instructions contained in the manual could result in severe personal injury to the user or bystanders, or cause damage to the equipment and property. Keep this manual in a convenient and safe place for future reference.

Whilst every effort has been made to ensure accuracy of information contained in this manual, the TQB Brands Pty Ltd policy of continuous improvement determines the right to make modifications without prior warning.

# CONTENT

WARNING INFORMATION .....	2
CONTENT .....	2
SAFETY OPERATING INSTRUCTIONS .....	3
ASSEMBLY, INSPECTION, AND OPERATION .....	4
PREVENTATIVE MAINTENANCE .....	5
PARTS DIAGRAM.....	6
TROUBLESHOOTING GUIDE .....	7
WARRANTY .....	8



*TQ Pro top quality Tools and Equipment are designed and manufactured for specialist professional use in a garage and workshop environment. TQ Pro products are strong, reliable, and well finished for the expert tool user who appreciates professional design, reliability, and attention to detail. Covered by our 12 month trade use warranty, our TQ Pro Tools & Equipment are made with pride to deliver the best combination of professional performance, presentation, and reliability.*



## SAFETY OPERATING INSTRUCTIONS



# SAFETY OPERATING INSTRUCTIONS



- **ENSURE THE LOCKING MECHANISM FULLY ENGAGES** once the required height is achieved and **BEFORE COMMENCING ANY WORK** under or on the raised platform. Release the lift button and listen/feel for the pawl to click into place. Visually confirm the lock is engaged before approaching or placing hands/body parts near or under the lift table.
- **DO NOT PLACE ANY BODY PARTS, TOOLS, ITEMS, OR PARTS** in the scissor mechanism, between the lifting arms, or under the lifting platform at any time. **CRUSH HAZARD** — The scissor arms can close suddenly if pressure is lost or the lock fails to hold.
- **ALWAYS ENGAGE AND VERIFY THE LOCKING MECHANISM** whenever the table is raised, especially prior to performing any maintenance, inspection, or repairs on the unit. Never rely solely on hydraulic pressure—use the mechanical lock for safety.
- If the locking pawl does not engage properly (e.g., due to debris, wear, or misalignment), **DO NOT USE THE UNIT**. Lower fully, remove from service, and have it inspected/repaired by qualified personnel.

### STORAGE WARNINGS

- Always store the Workshop Trolley in the fully lowered position to reduce stress on the scissor mechanism, prevent unintended movement, minimise trip hazards, and ensure stability during storage.
- Store the unit in a well-protected indoor area only, shielded from inclement weather (rain, snow, extreme temperatures), corrosive vapors (e.g., chemicals, fumes), abrasive dust, dirt, or any other harmful environmental elements that could damage hydraulic seals, electrical components, paint, or moving parts.
- This Workshop Trolley is designed for indoor use only — do not expose it to outdoor conditions, moisture, direct sunlight for prolonged periods, or any environment that could accelerate corrosion, contamination, or degradation of materials.
- Before storage, ensure the platform is fully lowered, the unit is clean and dry, any load is removed, and casters are locked if necessary to prevent accidental rolling.
- Proper storage helps maintain the unit's performance, extends service life, and preserves warranty coverage by avoiding exposure-related damage.

**The safe and effective use of this Workshop Trolley depends on a clear understanding of its operation, limitations, and hazards. Before allowing anyone to use the equipment, the owner and/or user must ensure the following:**

- Thoroughly read, understand, and follow all manufacturer's operating instructions, safety warnings, capacity limits, and maintenance guidelines in this manual before initial use or allowing others to operate the Workshop Trolley.
- Only careful, competent, properly trained, and qualified personnel may operate or use this equipment. Operators must be knowledgeable in safe handling of hydraulic lifting devices and servicing motor vehicles/under-vehicle components.
- Emphasize all warning, danger, and caution statements during training; ensure every operator fully understands them. Do not operate until comprehension is confirmed.
- If an operator is not fluent in English, the purchaser/owner must read and explain the entire manual (including instructions and warnings) in the operator's native language and verify full comprehension before use.
- Study this manual carefully and keep it readily available for reference by all operators and maintenance personnel.
- Ensure all warning labels, capacity plates, instructional decals, and the operator's manual remain clean, legible, and securely attached at all times. Immediately replace any damaged, faded, missing, or illegible items with genuine manufacturer-supplied replacements to maintain safety compliance.
- Replacement labels, decals, and manual copies are available directly from the manufacturer upon request.

Failure to comply with these safety operating instructions may result in serious injury, property damage, or death. Always prioritize safety training, clear communication, and proper equipment condition.

## ASSEMBLY, INSPECTION, AND OPERATION

### 1. ASSEMBLY

1. Wrap PTFE thread seal tape around the threads of the air quick disconnect fitting of your choice before installing it into the air/hydraulic pump. Install the air quick disconnect.
2. Connect the shop air line (airline) to the air quick disconnect fitting on the pump. Ensure the hose is long enough to safely reach the work area while allowing free movement and handling during operation.
3. Open the air vent/filler screw (breather) on top of the pump reservoir by turning it counterclockwise two full turns from its fully closed position. This allows the reservoir to breathe and prevents damage from vacuum or pressure buildup.
4. Verify that shop air pressure is regulated between 100 and 120 psi (do not exceed 120 psi to avoid damaging the pump or reducing performance).
5. Before moving the Workshop Trolley, confirm that the control cable is securely attached, properly routed, and not lying on the floor where it could become a trip hazard or get damaged.
6. Ensure all locking caster wheels are unlocked for mobility.
7. Determine the specific work to be performed, and select the appropriate adapters, supports, or restraints needed to securely fasten the component or load to the lift table on the Workshop Trolley.

### 2. INSPECTION

A thorough visual inspection must be performed before each use of the Workshop Trolley to check for leaking hydraulic fluid, damaged, loose, missing, or excessively worn parts, and any other signs of deterioration. Any Workshop Trolley that appears damaged in any way, is badly worn, or operates abnormally **MUST BE REMOVED FROM SERVICE** immediately. If the unit is accidentally subjected to an abnormal load, shock, or overload, it must be taken out of service until properly inspected, repaired, or replaced. Defective parts, decals, or warning labels must be replaced only with manufacturer-specified genuine parts. A list of authorized repair facilities is available from the manufacturer.

### 3. OPERATION

1. Inspect the worksite to ensure no obstructions prevent safe maneuvering of the Workshop Trolley.
2. Before first use (or if unfamiliar), operate the Workshop Trolley several times without load to become familiar with the raise and lower controls.
3. Releasing the controller's lift button engages the safety lock. To lower, if the locking pawl is fully engaged, it may be necessary to slightly raise the Workshop Trolley before pressing the DOWN button on the pendant.

#### To lower load

1. Raise the vehicle to the desired work height and secure it to the lift per the vehicle lift manufacturer's recommended procedures and warnings.
2. Before removing or installing an under-vehicle component, consult the vehicle manufacturer for the proper procedure.
3. If handling a fuel tank, drain fuel from the tank prior to removal or installation.
4. If handling a battery, follow the vehicle manufacturer's procedure for safe removal and installation.
5. Position the Workshop Trolley under the component so it centers on the lift table, then lock the caster wheels.
6. Depress the lift button to raise the lift table close to the component.

#### To raise load

1. Raise the vehicle to the desired work height and secure it to the lift per the vehicle lift manufacturer's recommended procedures and warnings.
2. Before installing an under-vehicle component, consult the vehicle manufacturer for the proper procedure.
3. If using the included Adapter Kit, ensure it is securely attached to the lift table, properly adjusted to fit the component, and the component is firmly secured on the kit.
4. Maneuver the Workshop Trolley under the vehicle so the component aligns with its installation position, then lock the caster wheels.
5. Depress the lift button to raise the component close to its assembly location under the vehicle.
6. Ensure the component is clear of wires, cables, hydraulic/fuel lines, or other obstructions that could interfere with installation.
7. Verify the component's fore/aft and side-to-side tilt angles are correct for installation; readjust adapters in the Adapter Kit if needed.
8. Continue raising the component into final position.

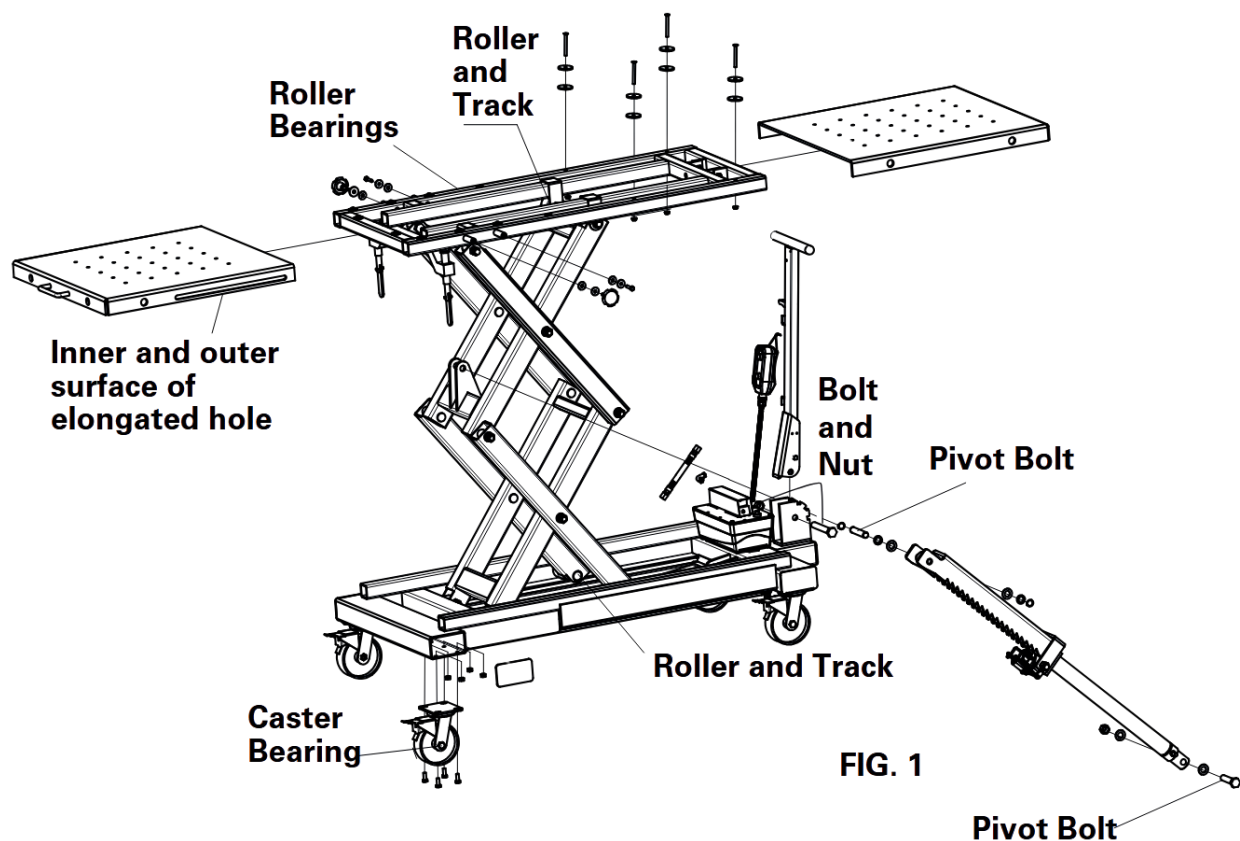
**WARNING: Make sure not to raise the Workshop Trolley's lift table enough to dislodge the vehicle from the above ground lift. It may be necessary to use the adapter kit to achieve the proper angle necessary to conform to the component. When the locking pawl is fully engaged it may be necessary to raise the Workshop Trolley's lift table slightly before depressing the DOWN button on the pendant to lower the Workshop Trolley's lift table.**

## PREVENTATIVE MAINTENANCE

To maintain the Workshop Trolley's operating efficiency and safety, follow this maintenance schedule and procedures. These are the responsibility of the Workshop Trolley owner.

**REGULARY** - Frequency depends on usage and shop conditions.

1. Always store the Workshop Trolley in a well-protected indoor area, shielded from inclement weather, corrosive vapors, abrasive dust, or other harmful elements. This unit is designed for indoor use only.
2. Keep all Workshop Trolley labels clean and readable. Clean external surfaces with a mild soap solution (avoid moving hydraulic components), then dry completely immediately after.
3. Inspect the Workshop Trolley before each workday. Do not use if any component is cracked, broken, bent, shows excessive wear, damage, or leaks hydraulic fluid or air. Remove from service until properly repaired or serviced.
4. Periodically check for loose or missing hardware or components. Correct any issues before use. Damage or premature wear from loose/missing hardware is not covered under warranty.
5. Carefully examine the battery and control housing for damage; repair or replace as needed.
6. Apply only general-purpose lithium-based grease to prevent premature wear and ensure smooth operation. Lubrication points are shown in Figure 1. Wear or damage from improper grease, inadequate lubrication, or lack of lubrication is not eligible for warranty consideration.

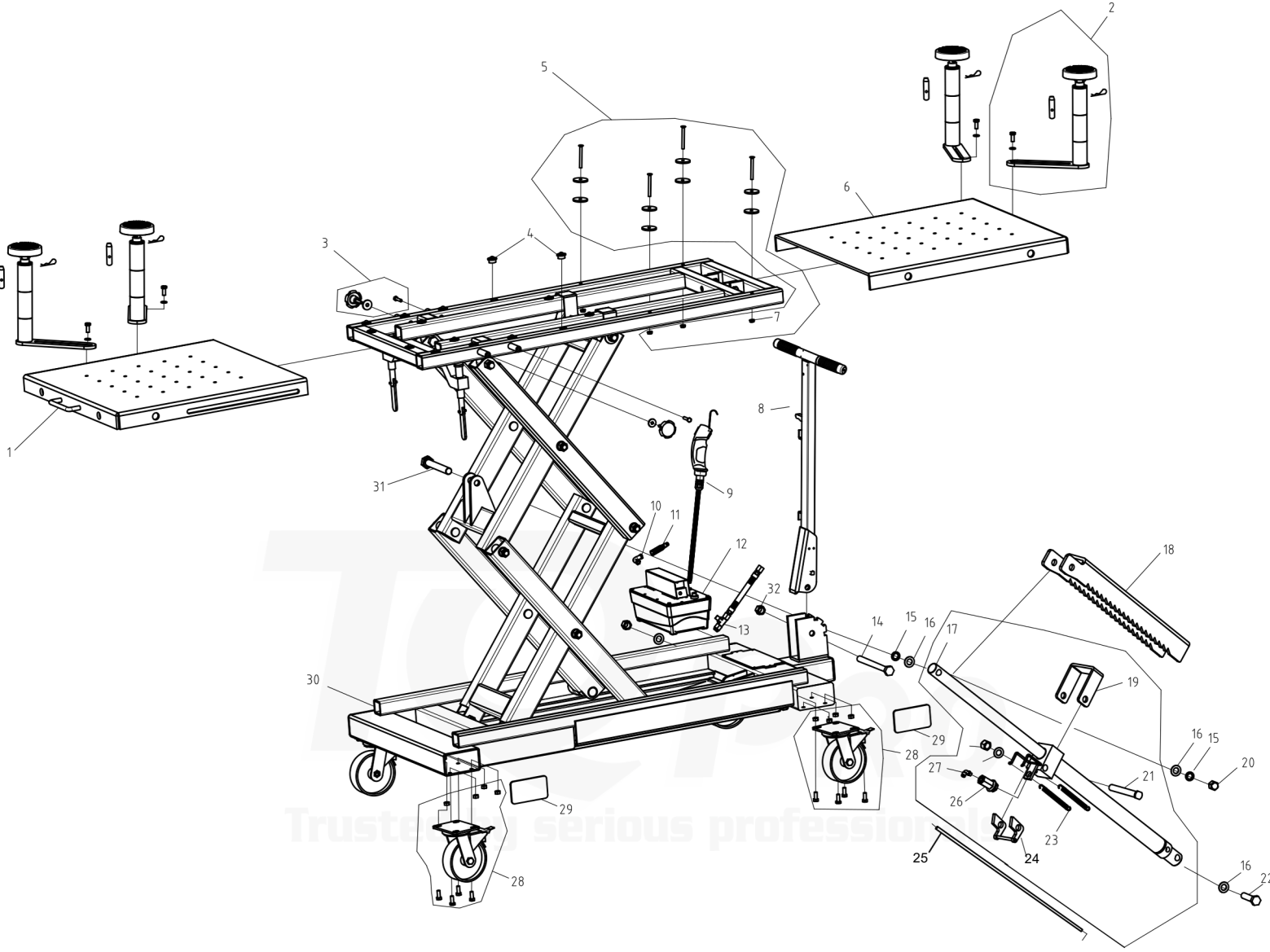


### TYPE OF OIL AND CORRECT OIL LEVEL

It is not necessary to refill the pump reservoir with hydraulic fluid unless a visible leak is present. If fluid is required, use only non-detergent hydraulic jack oil with an ISO 32 viscosity rating (or equivalent 32-weight hydraulic oil). Using any other fluid will damage the seals and void the warranty.

To ensure proper performance, maintain the pump reservoir at the correct fluid level of 1,600 cc. Remove the vented fill screw on top of the pump by turning it counterclockwise to add fluid. Check the acceptable fluid level by inserting a clean dipstick or similar rod through the fill hole until it touches the bottom of the reservoir, then withdraw it to read the level. The fluid should reach at least halfway up the reservoir depth.

**PARTS DIAGRAM**



Index No.	Ref #	Description	Qty
2	P07-0220-2	ADAPTOR ASSEMBLY (4PCS)	1
3	P07-0220-3	HANDLE WHEEL	1
8	P07-0220-8	HANDLE ASSEMBLY	1
9	P07-0220-9	CONTROL SWITCH ASSEMBLY	1
12	P07-0220-12	AIR PUMP ASSEMBLY	1
17	P07-0220-17	RAM ASSEMBLY	1
28	P07-0220-28	SWIVEL WHEEL ASSEMBLY	1
29	P07-0220-29	TUBE END CAP	1

## TROUBLESHOOTING

Problem	Cause	Solution
The pump does not operate	<ul style="list-style-type: none"> <li>• Check shop air supply</li> <li>• Controller and/or cable damaged</li> </ul>	<ul style="list-style-type: none"> <li>• Pump requires at least 100psia</li> <li>• Repair or replace</li> </ul>
Pump operates but lift table does not go up or down	<ul style="list-style-type: none"> <li>• Load may exceed rated capacity</li> <li>• Hydraulic fluid or air leak</li> <li>• Insufficient air pressure or hydraulic fluid</li> </ul>	<ul style="list-style-type: none"> <li>• Reduce load</li> <li>• Repair leak</li> <li>• 100psia is required 1,600cc of fluid required</li> </ul>
Lift table will not rise to full height	<ul style="list-style-type: none"> <li>• Pump low on hydraulic fluid</li> </ul>	<ul style="list-style-type: none"> <li>• Check fluid level in pump's reservoir</li> </ul>
Lift table raises or lowers slowly	<ul style="list-style-type: none"> <li>• Damaged air line</li> </ul>	<ul style="list-style-type: none"> <li>• Repair leaks in shop air line or controller cable</li> </ul>
Lift table will not lower	<ul style="list-style-type: none"> <li>• Locking pawl engaged</li> </ul>	<ul style="list-style-type: none"> <li>• Raise lift table until locking pawl disengages and then lower using controller</li> </ul>

**TQ PRO**  
Trusted by serious professionals

*TQ Pro top quality Tools and Equipment are designed and manufactured for specialist professional use in a garage and workshop environment. TQ Pro products are strong, reliable, and well finished for the expert tool user who appreciates professional design, reliability, and attention to detail. Covered by our 12 month trade use warranty, our TQ Pro Tools & Equipment are made with pride to deliver the best combination of professional performance, presentation, and reliability.*



## WARRANTY

**TQ Pro** products have been carefully tested and inspected before shipment and are guaranteed to be free from defective materials and workmanship for a period of 12 months from the date of purchase except where tools are hired out when the guarantee period is ninety days from the date of purchase.

Should this piece of equipment develop any fault, please return the complete tool to your nearest authorised warranty repair agent or contact TQB Brands Pty Ltd Warranty team – [warranty@tqbbrands.com.au](mailto:warranty@tqbbrands.com.au).

If upon inspection it is found that the fault occurring is due to defective materials or workmanship, repairs will be carried out free of charge. This guarantee does not apply to normal wear and tear, nor does it cover any damage caused by misuse, careless or unsafe handling, alterations, accident, or repairs attempted or made by any personnel other than the authorised TQB Brands Pty Ltd repair agent.

This guarantee applies in lieu of any other guarantee expressed or implied and variations of its terms are not authorised.

Your TQB Brands Pty Ltd guarantee is not effective unless you can produce upon request a dated receipt or invoice to verify your proof of purchase within the 12 month period.

**Consumer Guarantee** Our goods come with a guarantee that cannot be excluded under the Australian Consumer Law. You are entitled to a replacement or refund for a major failure and compensation for any other reasonably foreseeable loss or damage. You are also entitled to have the goods repaired or replaced if the goods fail to be of acceptable quality and the failure does not amount to a major failure.



All images and illustrations shown are for reference purposes only. All information, specifications and illustrations in this manual are based on the latest information available at the time of publication and are subject to change without notice. The information in this manual is periodically revised to ensure the latest information is included. Download the latest version of this manual and other related technical documentation from [www.tqbbrands.com.au](http://www.tqbbrands.com.au).